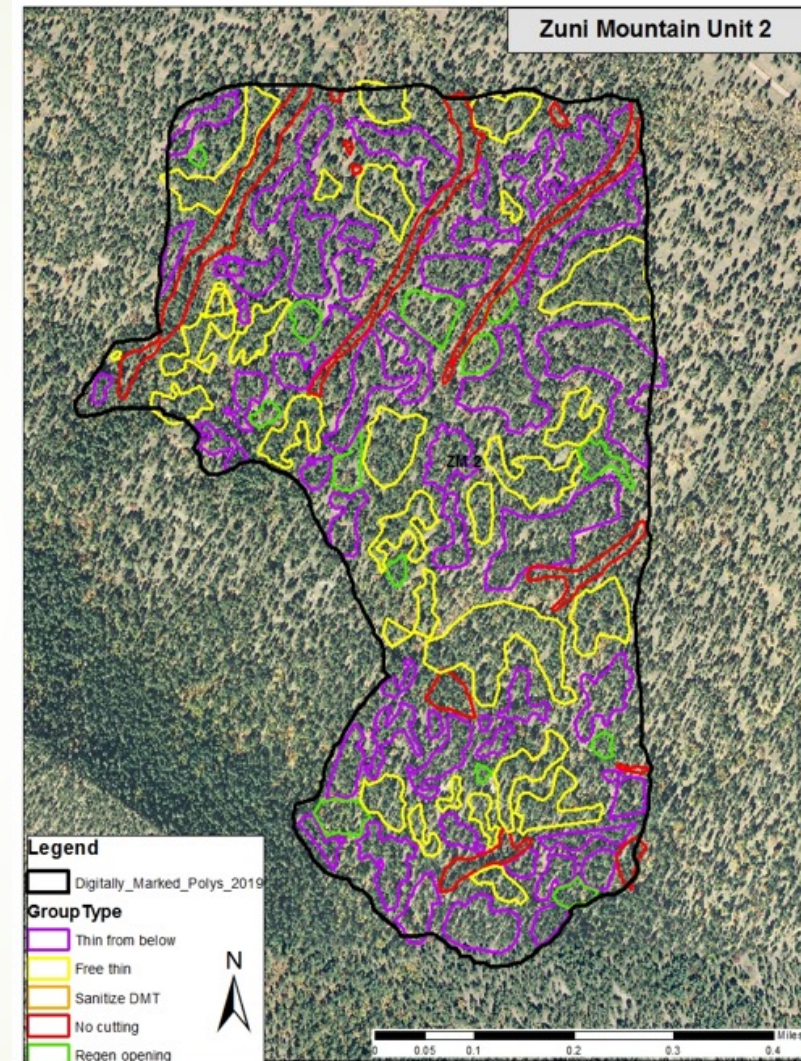


## Puerco Collaborative Forest Landscape Restoration Project

### Results: Nothing has been cut out yet, but...

- ▶ Two-thirds of the units were even-aged, almost pure ponderosa pine with low-moderate mistletoe.
  - ▶ Pine-oak and a PFA
- ▶ Average group size is 0.7 acres, with a range of 0.4 to 1.8 acres at the unit level.
- ▶ Largest polygon was a 21 acre DMT Sanitation.
- ▶ Average interspace is 45%, with a range of 29 – 54%



# Zuni Mountain CFLR - Puerco Collaborative Forest Landscape Restoration Project

## Pros and Cons of DxP and DxP+

- ▶ Reduce Cost
- ▶ Increased production
- ▶ Very Accessible
- ▶ Training is available online
- ▶ Inspection can be done online
- ▶ Field Inspection is faster with digital assistance
- ▶ Using Enterprise is expensive, results can be variable.
- ▶ Inspection is in the field and digital.
- ▶ Accuracy issues
- ▶ Consistently off by 10+ feet
- ▶ Device variability (type/Accu)
- ▶ Post-processing clean-up (overlaps, expanding small polys, broken edges).

**Communication is vital between marking crew, inspectors and Silviculturist Daily Q & A and feedback should be built in!**





## Zuni Mountain CFLR - Puerco Collaborative Forest Landscape Restoration Project

### Contact Info

- ▶ Shawn Martin – Silviculturist  
[shawn.a.martin@usda.gov](mailto:shawn.a.martin@usda.gov)
- ▶ Jay Williams – Timber Program Mgr.  
[john.h.williams@usda.gov](mailto:john.h.williams@usda.gov)
- ▶ Jason Eakins – Administration/Project Supervisor  
[jason.eakins@usda.gov](mailto:jason.eakins@usda.gov)
- ▶ Asha Houston – Presale/Inspector  
[endasha.houston@usda.gov](mailto:endasha.houston@usda.gov)





## Virtual Boundaries



- Low Value Timber
- Tablet Technology
- Saves Paint
- Saves Labor
- Aesthetics
- Mostly DxP and DxP+



## Scale By Load Count with Weighing Frequency:

- Load Tickets become more accountable.
- Ticket Slips are deposited with every load at an agreed to location.
- On a predetermined frequency, loads will be weighed to ensure we are still meeting weight error.
  - May be able to use CAT scaling app to reduce paperwork errors from truck drivers.







# **Puerco Collaborative Forest Landscape Restoration Project Update**





# Puerco Collaborative Forest Landscape Restoration Project Update

## **November 5, 2018:**

Final Environmental Assessment (EA) and Draft Decision Notice (DN) / Finding of No Significant Impact (FONSI) were released to the public, initiating the 45-day Objection Period for those who commented on the Draft EA (10 respondents).

## **December 3, 2018:**

Objection Filing Period cancelled to re-initiate consultation with US Fish & Wildlife Service

## **December 20, 2019:**

Re-release of the Final EA and Draft DN/FONSI, initiating the 45-day Objection Period.

- 1 Objection was filed by the Center for Biological Diversity and Dick Artley

**February 19 – March 3, 2020:** Objection Review and Responses.

**March 12 – 13<sup>th</sup>:** Resolution Meetings

**March 19<sup>th</sup>:** Objection Responses and signed Decision



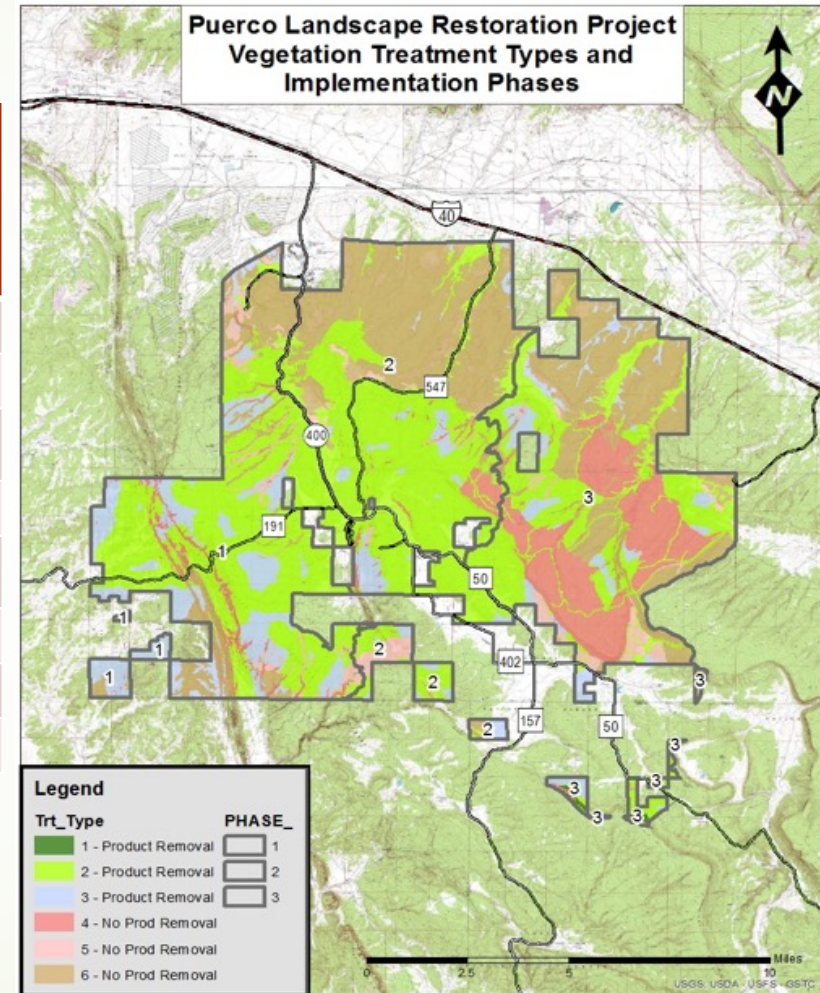
# Updated Proposed Action

The Proposed Action has been modified since public scoping. The following are the changes:

- ▶ During the field verification process after scoping, areas located in the northern portion of the project area on sensitive Chinle Formation soils were reclassified from hand thin, lop and scattering slash and prescribe burning to thinning, lop and scattering and no prescribe burning to protect soil conditions and reduce potential erosion. Proposed acres of hand thinning with no burning increased from approximately 4,500 to 23,000 acres.
- ▶ During the field verification process after scoping, areas with poor road condition and access located in and around McKenzie Ridge in the northeastern portion of the project area were reclassified from thinning and prescribe burning to burn only, increasing from approximately 3,750 to 8,300 acres.
- ▶ Acres of proposed commercial treatments were adjusted from 43,000 down to 31,400 acres.
- ▶ Mexican Spotted Owl surveys conducted in 2017 found two new Protected Activity Centers located inside of the project area that will result in timing restrictions and less intensive treatments on 624 acres.
- ▶ The Puerco Project boundary was adjusted so that there were no longer any overlap or gaps with Bluewater, which resulted in a reduction of 9 acres, from 80,986 to 80,977 acres. This Final EA reflects that acreage change.

# Proposed Action and Implementation

Vegetation Cover Type	Mechanical Treatment with Prescribed Fire	Mechanical Treatment Only	Prescribed Fire Only
Dry Mixed Conifer	263	300	212
Ponderosa Pine	19,423	2,068	3,481
Ponderosa Pine-Gambel Oak	10,908	1,073	3,045
Pinyon-juniper Woodland	875	17,444	225
Ponderosa Pine/P-J Transition	10,209	1,908	1,285
Grassland/Shrubland	7,671	534	33
Riparian Meadow	21	1	0
<b>Totals:</b>	<b>49,369</b>	<b>23,328</b>	<b>8,281</b>







# State Forestry Thanks



# Continued funding is critical to restore dry forested ecosystems

## ► CFLR beyond the 2-year extension ----

- How to fund implementation of the Puerco EA?
- How to treat adjacent lands?
- How to continue monitoring?
- How to continue follow-up burns and maintenance burns?

## ► The Bin

- March 2 – 4, ABQ Cross-Boundary Workshop, <https://sweri.eri.nau.edu/cross-boundary-landscape-restoration-workshop/>
- Cibola County CWPP, <https://foreststewardsguild.org/cibola-cwpp/> **Take Survey, February 26 Community Meeting 5:30**
- National Forest Foundation CFLR Survey – 10 min. 13 questions, due 2/14, <https://www.surveymonkey.com/r/K2X5HDH>



## Scale By Load Count with Weighing Frequency:

- Load Tickets become more accountable.
- Ticket Slips are deposited with every load at an agreed to location.
- On a predetermined frequency, loads will be weighed to ensure we are still meeting weight error.
  - May be able to use CAT scaling app to reduce paperwork errors from truck drivers.

